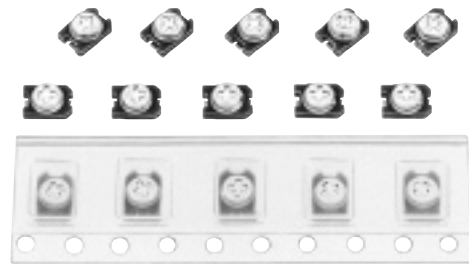


Chip Type Adjustable(pre-set) Ceramic Capacitors

Series: **K**

Series K is 3 mm square, surface mounting device.



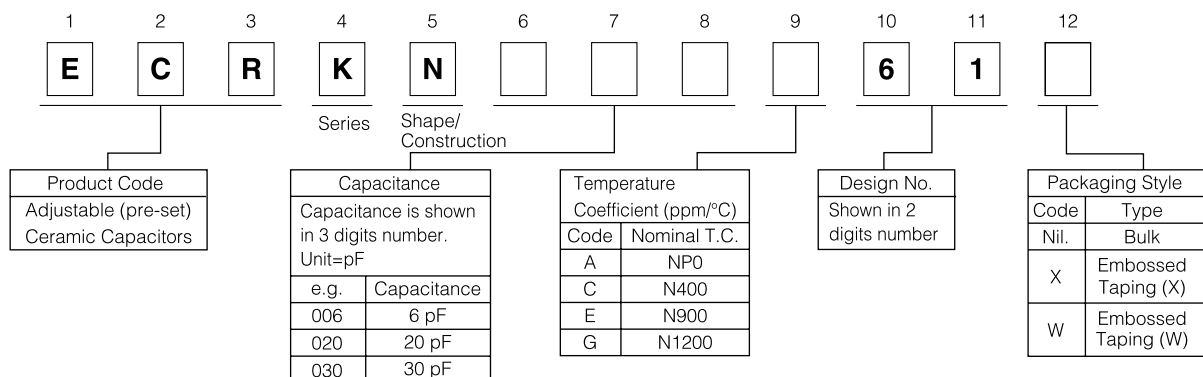
■ Features

- Miniaturized and ultra thin type SMD: 3.2 x 4.5 x 1.8 mm max.
- Embossed taping types are available for automated machines
- Applicable to reflow soldering
- Distinguishable capacitance from coloured case

■ Recommended Applications

- Hybrid IC and micromodules
- Portable radios and cassette tape players
- VTR cameras
- Paging systems
- Cordless telephones

■ Explanation of Part Numbers



■ Ratings and Characteristics

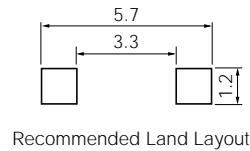
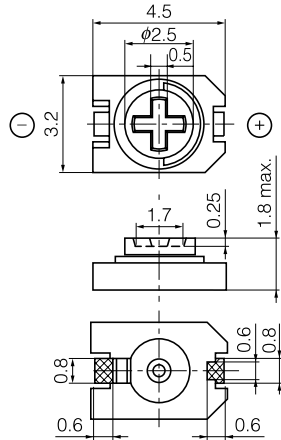
Item	Ratings
Rated Voltage	100 VDC
Dielectric Withstanding Voltage	220 VDC
Insulation Resistance (at C max.)	10 ⁴ MΩ min. at 100 VDC and 1 minute electrification
Rotation Torque	0.98 to 9.81 mN · m (10 to 100 gf · cm)
Operating Temperature Range	- 25 to +85 °C

Part Number	Capacitance (pF)		Temperature Coefficient (ppm/°C)	Q (at 1 MHz, C max.)	Color Marking
	max.	min.			
ECRKN003A61□	3 ⁺⁵⁰ / ₀ %	1.7 max.	NP0±300	500 min.	Brown
ECRKN006A61□	6 ⁺⁵⁰ / ₀ %	2.5 max.	NP0±300		Blue
ECRKN010C61□	10 ⁺⁵⁰ / ₀ %	3.0 max.	N400±400		White
ECRKN020E61□	20 ⁺⁵⁰ / ₀ %	5.0 max.	N900±400	300 min.	Red
ECRKN030G61□	30 ⁺⁵⁰ / ₀ %	6.0 max.	N1200±500		Green

Design and specifications are each subject to change without notice. Ask factory for the current technical specifications before purchase and/or use. Should a safety concern arise regarding this product, please be sure to contact us immediately.

■ Dimensions in mm (not to scale)

ECRKN□□□□61

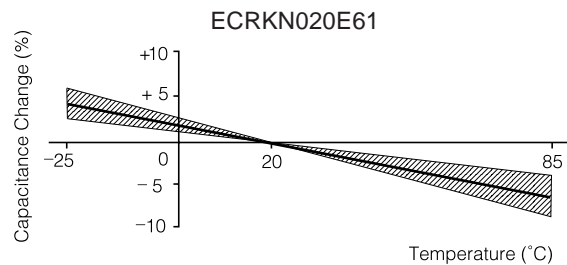
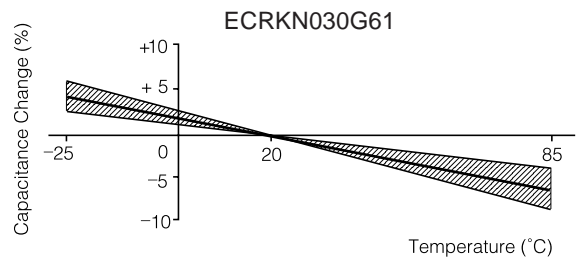
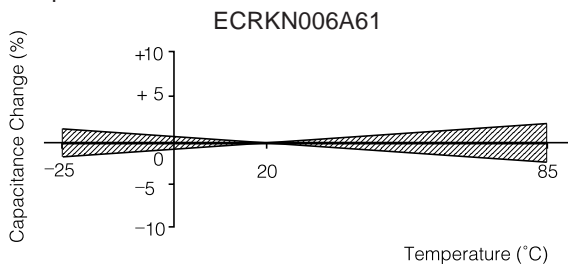


Recommended Land Layout

effective electrode

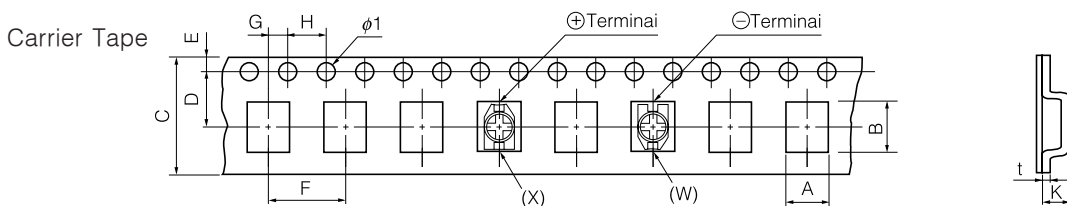
■ Typical Characteristics

Temperature Characteristics



■ Packaging Specifications

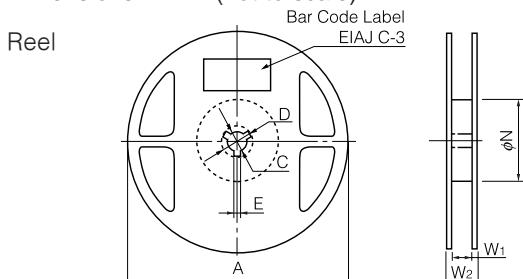
● Dimensions in mm (not to scale)



A	B	C	D	E	F	G	H	K	t	I
3.6±0.2	4.9±0.2	12.0±0.3	5.5±0.1	1.75±0.10	8.0±0.1	2.0±0.1	4.0±0.1	2.4±0.2	0.30±0.05	1.5±0.1

Taped Type	Part Number
X	ECRKN□□□□61X
W	ECRKN□□□□61W

● Dimensions in mm (not to scale)



Reusable Reel EIAJ ET-7200 : RRM12B

A	N	C	D	E	W ₁	W ₂	Packaging Quantity
180	60	13	21	2.0	13.0	15.4	1000 pcs.