

Features

- Single and dual section control
- Metal shaft styles
- Carbon element
- Center detent option
- Wide range of resistance tapers
- RoHS compliant*

Applications

- Audio/TV sets
- Car radio
- Amplifiers/mixers/drum machines/synthesizers
- PCs/monitors
- Appliances

PDB18 Series - 17 mm Rotary Potentiometer

Electrical Characteristics

TaperLinear, audio
 Standard Resistance Range
1 K ohms to 1 M ohms
 Standard Resistance Tolerance±20 %
 Residual Resistance1 % max.

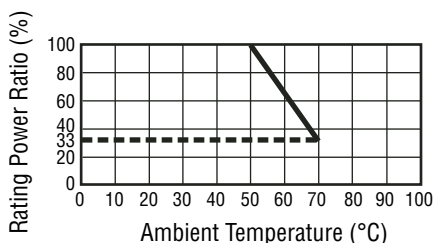
Environmental Characteristics

Operating Temperature
-10 °C to +50 °C
 Power Rating
 Linear0.2 watt
 Dual Section.....0.125 watt
 Audio0.1 watt
 Dual Section.....0.06 watt
 Maximum Operating Voltage
 Linear200 V
 Audio150 V
 Sliding Noise47 mV max.

Mechanical Characteristics

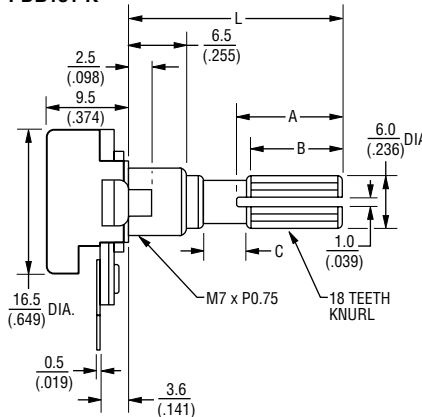
Mechanical Angle300 ° ±5 °
 Rotational Torque50 to 350 g-cm
 Detent Torque.....150 to 500 g-cm
 Stop Strength.....5 kg-cm min.
 Rotational Life.....15,000 cycles
 Soldering Condition
260 °C max. within 3 seconds
 HardwareOne flat washer and
 mounting nut supplied per
 potentiometer with bushing

Derating Curve

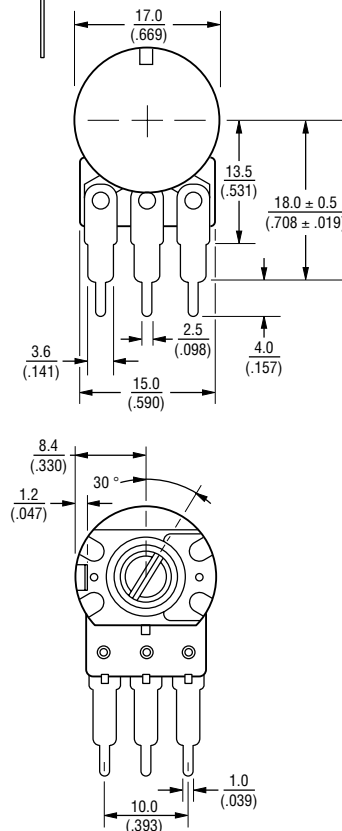
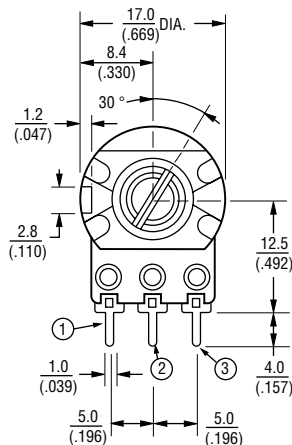
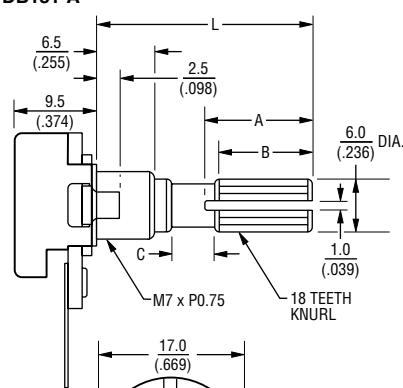


Product Dimensions

PDB181-K



PDB181-A

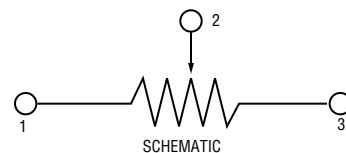


PDB18 Dimensions

L	20	25	30
	(.787)	(.984)	(1.181)
A	12	14	12
	(.472)	(.551)	(.472)
B	10	12	14
	(.393)	(.472)	(.551)
C	2	2	4
	(.078)	(.078)	(.157)

SHAFT SHOWN IN CCW POSITION

DIMENSIONS ARE: $\frac{\text{MM}}{\text{(INCHES)}}$



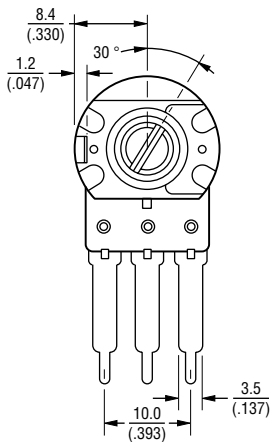
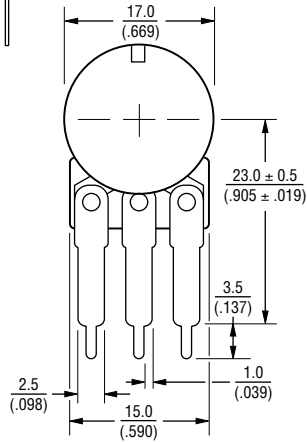
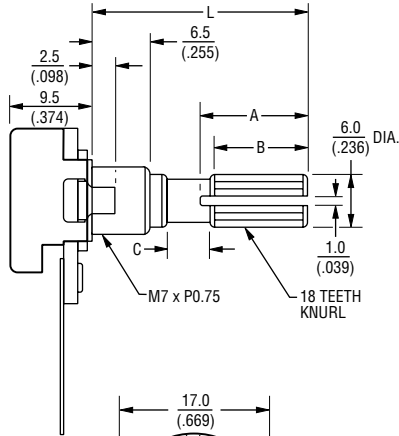
*RoHS Directive 2002/95/EC Jan 27 2003 including Annex. Specifications are subject to change without notice. Customers should verify actual device performance in their specific applications.

PDB18 Series - 17 mm Rotary Potentiometer

BOURNS®

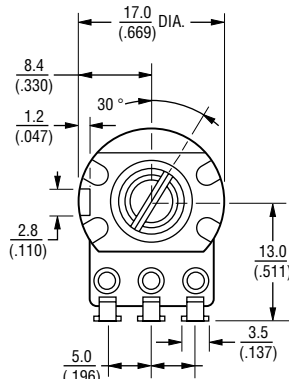
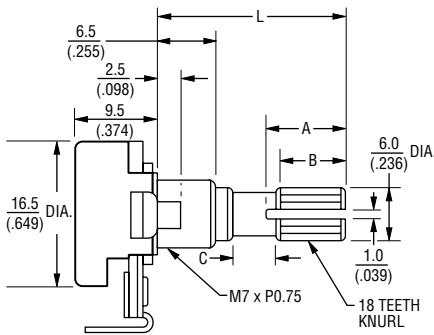
Product Dimensions

PDB181-B



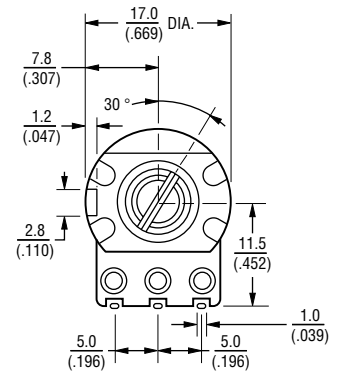
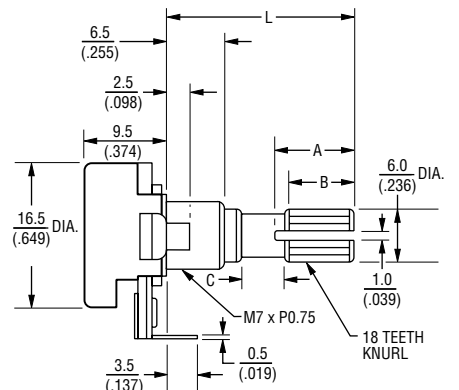
SHAFT SHOWN IN CCW POSITION

PDB181-E



SHAFT SHOWN IN CCW POSITION

PDB181-D



SHAFT SHOWN IN CCW POSITION

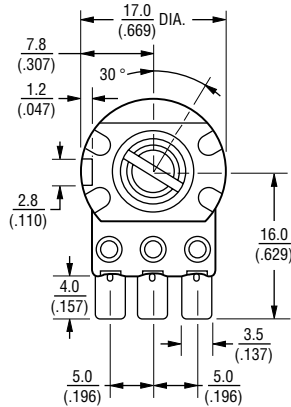
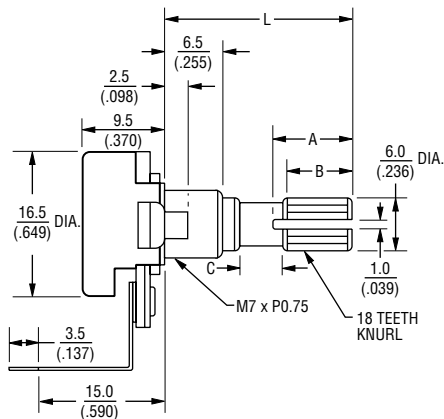
DIMENSIONS ARE: $\frac{\text{MM}}{\text{(INCHES)}}$

PDB18 Series - 17 mm Rotary Potentiometer

BOURNS®

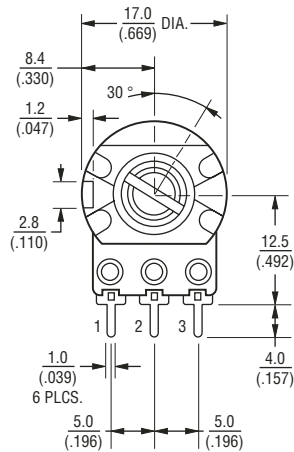
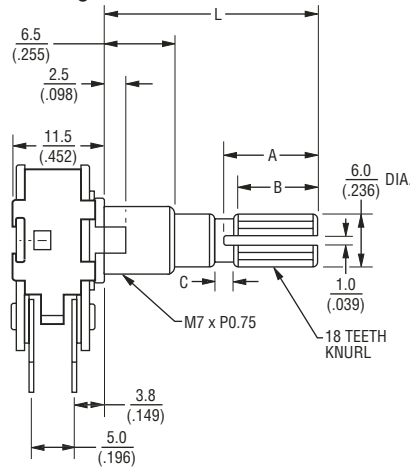
Product Dimensions

PDB181-P

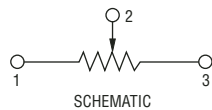


SHAFT SHOWN IN CCW POSITION

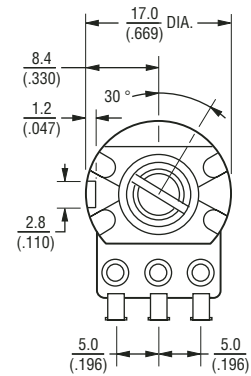
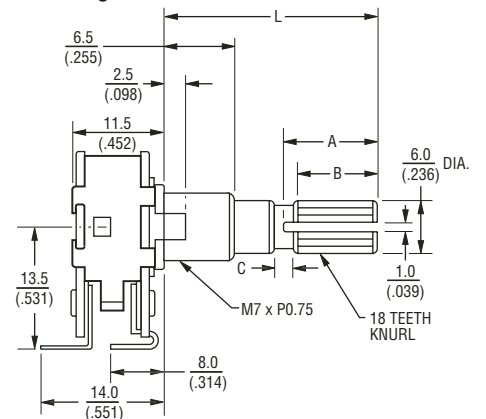
**PDB182-K
Dual Gang**



SHAFT SHOWN IN CCW POSITION



**PDB182-E
Dual Gang**



SHAFT SHOWN IN CCW POSITION

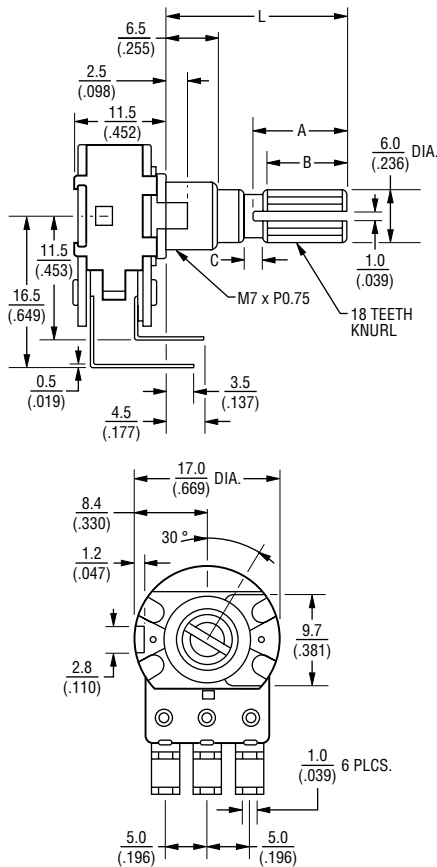
DIMENSIONS ARE: $\frac{\text{MM}}{\text{(INCHES)}}$

PDB18 Series - 17 mm Rotary Potentiometer

BOURNS®

Product Dimensions

PDB182-D Dual Gang



SHAFT SHOWN IN CCW POSITION

DIMENSIONS ARE: $\frac{\text{MM}}{\text{(INCHES)}}$

How To Order

PDB18 1 - K 4 25 K - 103 A

- Model _____
- Number of Sections _____
- 1 = Single Section
 - 2 = Dual Section
- Terminal Configuration (Pin Layout) (see individual drawings) _____
- K = PC Pins vertical/Down Facing (12.5 mm)
 - A = PC Pins vertical/Down Facing (18.0 mm)
 - B = PC Pins vertical/Down Facing (23.0 mm)
 - E = Solder Lugs Rear Facing
 - P = PC Pins Rear Facing
 - D = PC Pins Front Facing
- Detent Option _____
- 2 = Center Detent
 - 4 = No Detents
 - 5 = 11 Detents
 - 6 = 21 Detents
 - 7 = 31 Detents
 - 8 = 41 Detents
- Standard Shaft Length _____
- 20 = 20 mm
 - 25 = 25 mm
 - 30 = 30 mm
- Shaft Style _____
- K = Metal Knurled Type Shaft
 - 18 Toothed Serration Type
- Resistance Code (See Table) _____
- Resistance Taper _____
- A = Audio Taper
 - B = Linear Taper
- Other styles available.

Standard Resistance Table

Resistance (Ohms)	Resistance Code
1,000	102
2,000	202
5,000	502
10,000	103
20,000	203
50,000	503
100,000	104
200,000	204
500,000	504
1,000,000	105