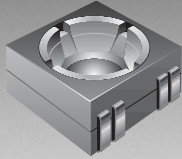


\*ROHS COMPLIANT



**BOURNS®**

## Features

- Recommended for reflow processing
- Rotor design compatible with pick and place and automatic adjustment equipment
- Supplied in 8 mm embossed tape, compatible with automatic assembly equipment
- Carbon element
- RoHS compliant\* - see [processing information](#) on lead free surface mount trimmers

## TC73 - Trimming Potentiometer

### Electrical Characteristics

Standard Resistance Range .....500 to 1 megohm  
 (see standard resistance table)  
 Resistance Tolerance .....±30 % std.  
 Absolute Minimum Resistance  
 ≤ 1K Ohms .....20 ohms max.  
 >1K Ohms .....2 % max. of TR  
 Contact Resistance Variation  
 .....5 % max.  
 Resolution.....Infinite  
 Adjustment Angle.....260 ° ±20 °(-2)

### Environmental Characteristics

Power Rating (50 VDC max.)  
 50 °C .....0.05 watt  
 Temperature Range.....-25 °C to +85 °C  
 Temperature Coefficient .....±250 ppm/°C  
 Humidity .....95 %RH  
 500 hours  
 TRS max. ....+15 % to -2 %  
 Load Life  
 .....@ 50 °C rated power 500 hours  
 TRS ±5 %  
 Rotational Cycling.....20 turns  
 TRS ±20 %

### Physical Characteristics

Torque.....10-150 g-cm max.  
 Mechanical Angle  
 .....Continuous; 260 ° ± 20 °  
 Marking.....Part marking code  
 Standard Packaging  
 .....2000 pcs./7 " reel

### Soldering Process

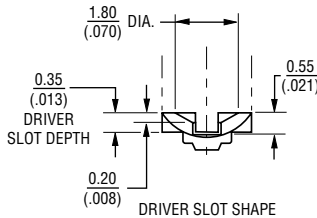
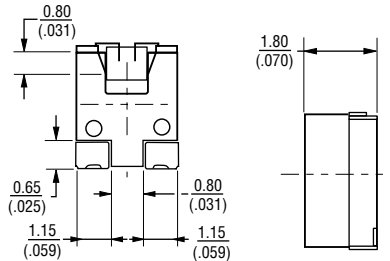
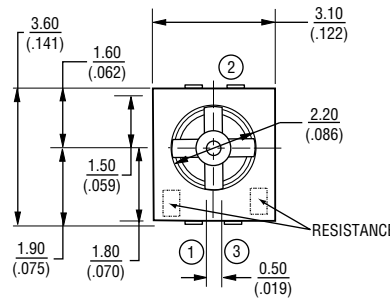
Hand Soldering ...Soldering Iron of 20 W  
 or less controlled at 280 °C for about  
 3 sec. while applying solder  
 Reflow Soldering .....Peak temperature  
 or reflow oven should be  
 set to 240 °C max.

### Standard Resistance Table

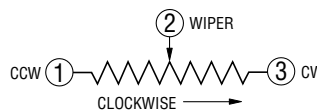
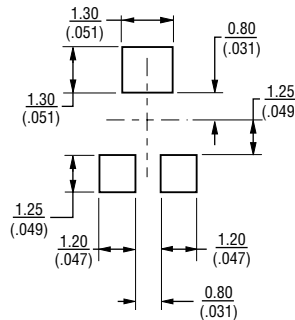
Resistance (Ohms)	Part Marking Code	Resistance Code
500	52	501
1,000	13	102
2,000	23	202
5,000	53	502
10,000	14	103
20,000	24	203
50,000	54	503
100,000	15	104
200,000	25	204
500,000	55	504
1,000,000	16	105

Popular distribution resistance values listed in boldface. Special resistances available.

TC73X/W-2



SUGGESTED PCB LAYOUT



### How To Order

TC73 X - 1 - 103 E

Model \_\_\_\_\_  
 Style \_\_\_\_\_  
 Orientation of Parts \_\_\_\_\_  
 In Tape:  
 Style X: Terminals Away From Sprocket Holes  
 Style W: Terminals in direction to sprocket holes (preferred)  
 Standard or Modified Product Indicator \_\_\_\_\_  
 1 = Mechanical rotation stop (preferred)  
 2 = Continuous  
 Resistance Code \_\_\_\_\_  
 Embossed Tape Designator \_\_\_\_\_  
 E = 2000 pcs. per reel, 8 mm tape

Consult factory for other available options.

DIMENSIONS ARE:  $\frac{\text{MM}}{\text{(INCHES)}}$

REV. 09/04

\*RoHS Directive 2002/95/EC Jan 27 2003 including Annex. Specifications are subject to change without notice. Customers should verify actual device performance in their specific applications.